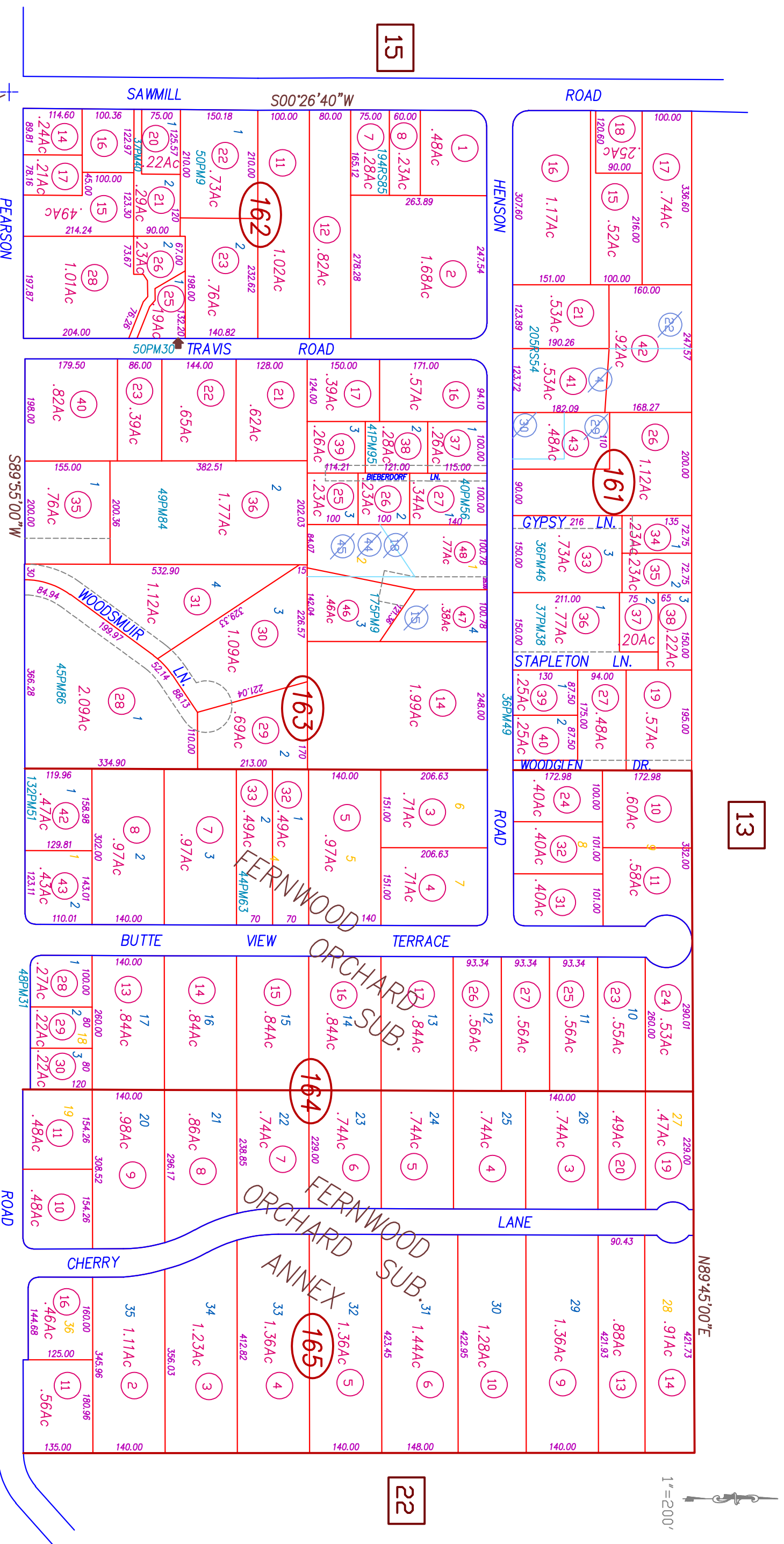


S. 1/2 OF N.E. 1/4 OF SEC. 24 T.22N. R.3E. M.D.B.&M.

54-16



17

13

15

22

CENTER OF SEC. 24

EDGEWOOD LANE

Butte County Assessor's Map  
Book 54, Page 16

FERNWOOD ORCHARD SUB. M.O.R. BK. 15 PG. 34  
FERNWOOD ORCHARD SUB. ANNEX M.O.R. BK. 18 PG. 1-2

All Assessor's maps are prepared for local property assessment purposes ONLY. Parcels shown thereon may not comply with State and local subdivision ordinances. No liability is assumed for use of information shown on any Assessor's map. ALL APPLICABLE APPLICABLE FEES RECORDED INFORMATION.

CREATED BY	PS	CREATED ON	2-28-2003
REMOVED BY	AC	REMOVED ON	05-9-2024
FILE NAME	54-16	EFFECTIVE	2024-25 ROLL
	Previous Book, Portion Of Page		
Compiled By The Butte County Assessor's Office			